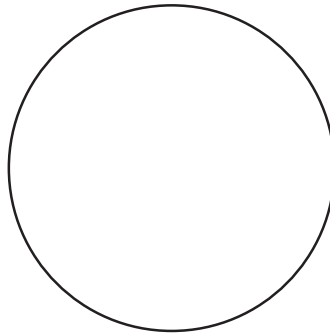


# Lola's Dimes

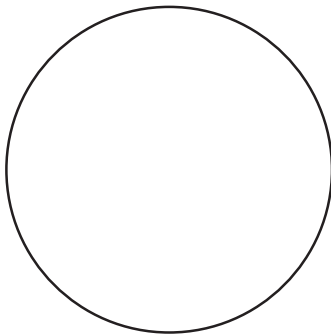
Use a 100 Chart and ten frames.

- Help Lola put 10 dimes into two groups. Some dimes are showing. Draw the others. Write number sentences and labels.

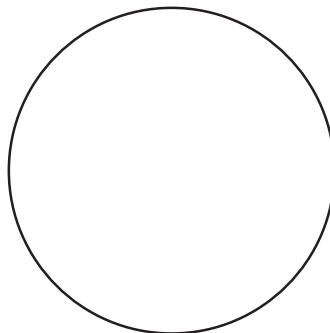


$$\underline{\hspace{2cm}} + \underline{\hspace{2cm}} = \underline{\hspace{2cm}}$$

Use ¢ to show what the numbers mean.

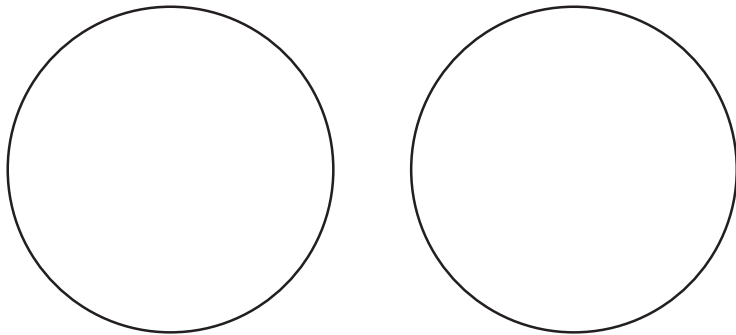


$$\underline{\hspace{2cm}} + \underline{\hspace{2cm}} = \underline{\hspace{2cm}}$$



$$\underline{\hspace{2cm}} + \underline{\hspace{2cm}} = \underline{\hspace{2cm}}$$

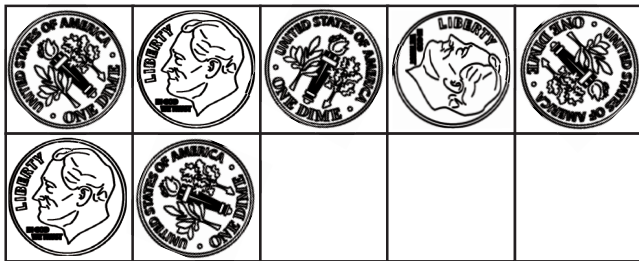
2. Show another way to put 10 dimes into 2 piles.  
Write number sentences.



\_\_\_\_\_ + \_\_\_\_\_ = \_\_\_\_\_  
addition number sentence

\_\_\_\_\_ - \_\_\_\_\_ = \_\_\_\_\_  
subtraction number sentence

3. Lola put some dimes on a ten frame.



A. What is the value of 7 dimes? \_\_\_\_\_

B. How many more dimes are needed to make 100¢? \_\_\_\_\_

C. Complete the number sentences. Use labels.

70¢ + 30¢ = \_\_\_\_\_

100¢ + 70¢ = \_\_\_\_\_

Name \_\_\_\_\_ Date \_\_\_\_\_

<b>Lola's Dimes Feedback Box</b>	<b>Expectation</b>	<b>Check In</b>	<b>Comments</b>
Partition 100 into groups of ten. [Q# 1–2]	E1		
Represent partitions of numbers using coins and number sentences. [Q# 1–3]	E2		
Represent addition and subtraction using number sentences [Q# 1–3]	E3		
Write numbers to 100. [Q# 1–3]	E4		
Solve addition and subtraction problems involving multiples of ten using coins, ten frames, and the 100 Chart. [Q# 1–3]	E7		

	<b>Yes . . .</b>	<b>Yes, but . . .</b>	<b>No, but . . .</b>	<b>No . . .</b>
<b>MPE6. Use labels.</b> I use labels to show what numbers mean. [Q# 1–3]				

Copyright © Kendall Hunt Publishing Company