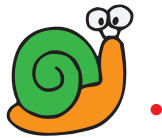


R Snail Races

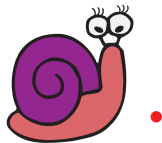


Sam Snail and Sally Snail raced. Sam ran 14 centimeters and Sally ran 6 inches.

1. Draw each distance. Start from the point.



Sam



Sally

2. Who traveled farther? Circle one.

Sam

Sally

S True or False



Levi used the *200 Chart* to skip count by tens and ones. Decide if each statement is true or false.

- | | | |
|--|------|-------|
| 1. I started at 82, skip counted 3 tens and 4 ones and landed on 126. | True | False |
| 2. I started at 158, skip counted 6 tens and went off the chart. | True | False |
| 3. I started at 147, skip counted 4 tens and 3 ones and landed on 190. | True | False |
| 4. I moved 19 less than 104 and landed on 85. | True | False |
| 5. I moved 31 less than 162 and landed on 141. | True | False |