

Unit 8: Home Practice

Part 1 Addition Flash Cards: Group F

Take home your Triangle Flash Cards: Group F. Ask a family member to choose one flash card at a time for you to solve. Sort the flash cards into three piles: Facts I Know Quickly, Facts I Can Figure Out, and Facts I Need to Learn. Update your *Addition Facts I Know* chart. Clip the cards in the Facts I Know Quickly pile together and place them back into the envelope. Practice the facts in the last two piles again.

Part 2 Fact Family Practice

A. $9 + \square = 16$

$7 + \square = 16$

$16 - \square = 7$

$\square - 7 = 9$

D. $9 + \square = 18$

$\square - 9 = 9$

B. $\square + 7 = 17$

$\square - 10 = 7$

$\square + 10 = 17$

$17 - \square = 10$

E. $\square + 5 = 15$

$15 - 5 = \square$

$\square - 10 = 5$

$5 + 10 = \square$

C. $\square + 8 = 17$

$\square + 9 = 17$

$\square - 9 = 8$

$17 - \square = 9$

F. $8 + \square = 14$

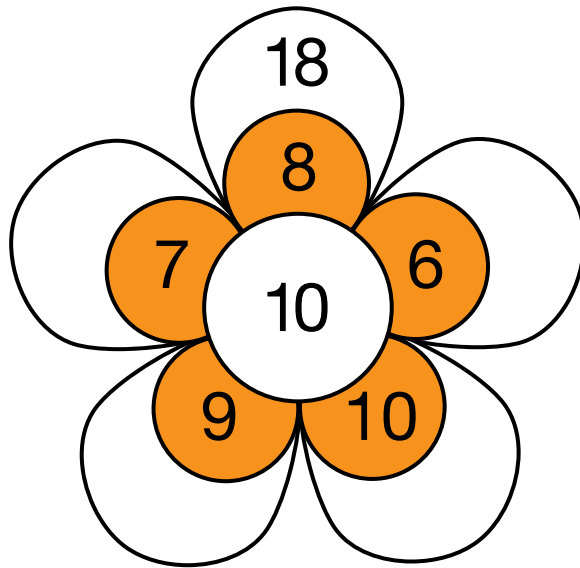
$14 - \square = 8$

$\square + 8 = 14$

$14 - 8 = \square$

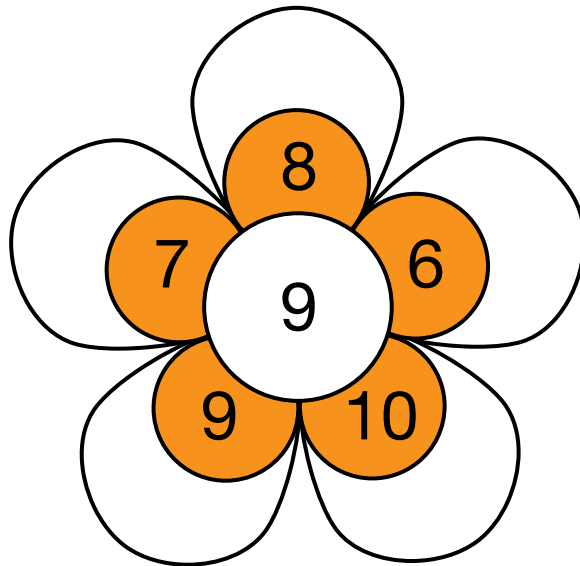
Part 3 Sum Patterns

1. Add to find the outside numbers. Write number sentences.



10 + 8 = 18

2. Add to find the outside numbers. Write number sentences.

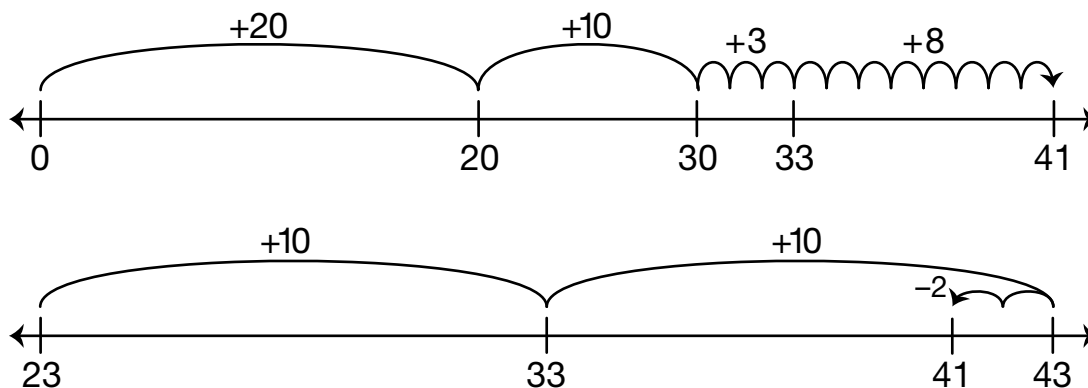


3. Read and discuss these questions with a family member. Look at the two flowers. What is the same about them? What is different? What pattern do you see in the outside petals?

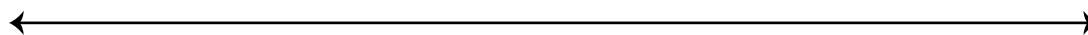
Part 4 Base-Ten Hoppers

Show how the base-ten hopper can add these numbers on the number line. Remember, the base-ten hopper can hop forward and backward and makes hops of only one or ten at a time. The example shows you two different ways.

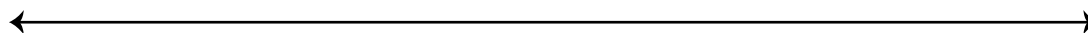
Example: $23 + 18$



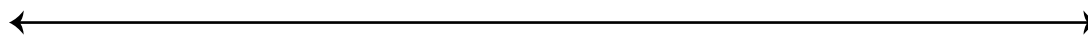
A. $15 + 15$



B. $39 + 11$



C. $42 + 49$



Part 5 Use Data to Solve Problems

On a safari trip, Dr. Little collected data about lions. He recorded the weight of several lions in the table below. Answer the questions based on the data in the table.

Lion's Weight

Lion	Weight in Pounds
Acton	245
Binta	366
Carl	260
Damon	293
Elsa	222

1. Janette says lions usually weight about 100 pounds. Look at Dr. Little's data. Do you agree with Janette? Why or why not?

2. Put the numbers in order from smallest to largest.

3. What is the range of weights of Dr. Little's lions? (Hint: the range is the smallest to largest numbers.)

Part 6 Base-Ten Pieces

Use base-ten shorthand to show the weights of the lions from Dr. Little's safari data.

Lion	Weight in Pounds	Base-Ten Shorthand
Acton	245	
Binta	366	
Carl	260	
Damon	293	
Elsa	222	

Teacher Guide

Part 2. Fact Family Practice (TG p. 1)
Questions A–F

- | | | |
|------|-------|------|
| A. 7 | B. 10 | C. 9 |
| 9 | 17 | 8 |
| 9 | 7 | 17 |
| 16 | 7 | 8 |
| D. 9 | E. 10 | F. 6 |
| 18 | 10 | 6 |
| | 15 | 6 |
| | 15 | 6 |

Name _____ Date _____

Unit 8: Home Practice

Part 1 Addition Flash Cards: Group F

Take home your Triangle Flash Cards: Group F. Ask a family member to choose one flash card at a time for you to solve. Sort the flash cards into three piles: Facts I Know Quickly, Facts I Can Figure Out, and Facts I Need to Learn. Update your *Addition Facts I Know* chart. Clip the cards in the Facts I Know Quickly pile together and place them back into the envelope. Practice the facts in the last two piles again.

Part 2 Fact Family Practice

- | | | |
|-----------------------|-----------------------|-----------------------|
| A. $9 + \square = 16$ | B. $\square + 7 = 17$ | C. $\square + 8 = 17$ |
| $7 + \square = 16$ | $\square - 10 = 7$ | $\square + 9 = 17$ |
| $16 - \square = 7$ | $\square + 10 = 17$ | $\square - 9 = 8$ |
| $\square - 7 = 9$ | $17 - \square = 10$ | $17 - \square = 9$ |
| D. $9 + \square = 18$ | E. $\square + 5 = 15$ | F. $8 + \square = 14$ |
| $\square - 9 = 9$ | $15 - 5 = \square$ | $14 - \square = 8$ |
| | $\square - 10 = 5$ | $\square + 8 = 14$ |
| | $5 + 10 = \square$ | $14 - 8 = \square$ |

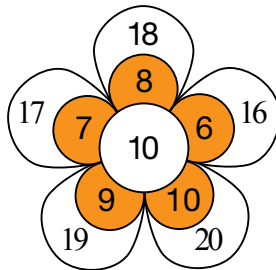
TG • Grade 2 • Unit 8 • Home Practice

Copyright © Kendall Hunt Publishing Company

Teacher Guide - Page 1

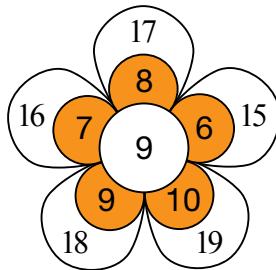
Part 3. Sum Patterns (TG p. 2)
Questions 1–3

1.



- | |
|----------------|
| $10 + 8 = 18$ |
| $10 + 6 = 16$ |
| $10 + 10 = 20$ |
| $10 + 9 = 19$ |
| $10 + 7 = 17$ |

2.



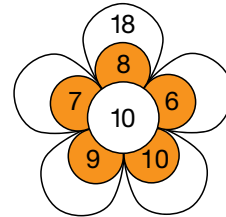
- | |
|---------------|
| $9 + 8 = 17$ |
| $9 + 6 = 15$ |
| $9 + 10 = 19$ |
| $9 + 9 = 18$ |
| $9 + 7 = 16$ |

3. Possible response: The small petals have the same numbers. The center is different by 1. The sums in Question 2 are 1 smaller than the sums in Question 1.

Name _____ Date _____

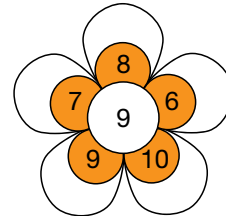
Part 3 Sum Patterns

1. Add to find the outside numbers. Write number sentences.



- | |
|---------------|
| $10 + 8 = 18$ |
| _____ |
| _____ |
| _____ |
| _____ |

2. Add to find the outside numbers. Write number sentences.



- | |
|-------|
| _____ |
| _____ |
| _____ |
| _____ |
| _____ |

3. Read and discuss these questions with a family member. Look at the two flowers. What is the same about them? What is different? What pattern do you see in the outside petals?

Copyright © Kendall Hunt Publishing Company

TG • Grade 2 • Unit 8 • Home Practice 2

Teacher Guide - Page 2

Copyright © Kendall Hunt Publishing Company

Name _____ Date _____

Part 4 Base-Ten Hoppers

Show how the base-ten hopper can add these numbers on the number line. Remember, the base-ten hopper can hop forward and backward and makes hops of only one or ten at a time. The example shows you two different ways.

Example: $23 + 18$

A. $15 + 15$

B. $39 + 11$

C. $42 + 49$

Copyright © Kendall Hunt Publishing Company

3 TG • Grade 2 • Unit 8 • Home Practice

Teacher Guide - Page 3

Name _____ Date _____

Part 5 Use Data to Solve Problems

On a safari trip, Dr. Little collected data about lions. He recorded the weight of several lions in the table below. Answer the questions based on the data in the table.

Lion's Weight	
Lion	Weight in Pounds
Acton	245
Binta	366
Carl	260
Damon	293
Elsa	222

- Janette says lions usually weight about 100 pounds. Look at Dr. Little's data. Do you agree with Janette? Why or why not?
- Put the numbers in order from smallest to largest.

- What is the range of weights of Dr. Little's lions? (Hint: the range is the smallest to largest numbers.)

Copyright © Kendall Hunt Publishing Company

TG • Grade 2 • Unit 8 • Home Practice 4

Teacher Guide - Page 4

Part 4. Base-Ten Hoppers (TG p. 3)
Questions A–C

A.

OR

B.

C.

OR

Part 5. Use Data to Solve Problems (TG p. 4)
Questions 1–3

- No; lion weights vary between 222 – 366 pounds.
- 222, 245, 260, 293, 366
- 222 – 366 pounds

Part 6. Base-Ten Pieces (TG p. 5)

Lion's Weight

Lion	Weight in Pounds	Base-Ten Shorthand
Acton	245	
Binta	366	
Carla	260	
Damon	293	
Elsa	222	

Name _____ Date _____

Part 6 Base-Ten Pieces

Use base-ten shorthand to show the weights of the lions from Dr. Little's safari data.

Lion	Weight in Pounds	Base-Ten Shorthand
Acton	245	
Binta	366	
Carl	260	
Damon	293	
Elsa	222	

Copyright © Kendall Hunt Publishing Company

5 TG • Grade 2 • Unit 8 • Home Practice

Teacher Guide - Page 5