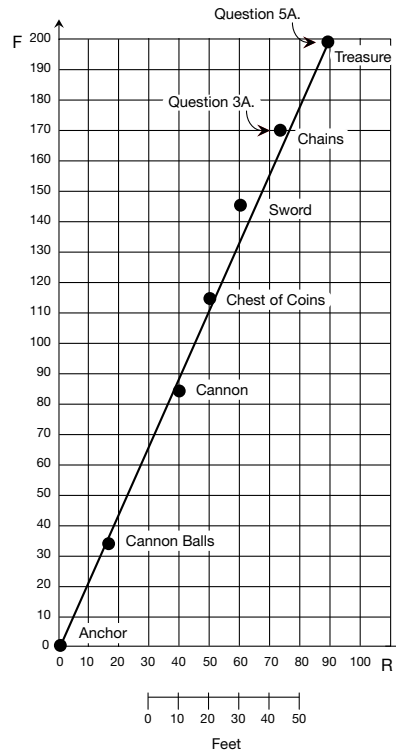


Student Activity Book

Treasure Map (SAB pp. 479–482)
Questions 1–5

1.



2. Note: Coordinates can be listed in words or as an ordered pair.

Object	Coordinates
Cannon Balls	(18, 35)
Sword	(60, 145)
Cannon	40 right, 85 front
Anchor	(0, 0)
Chest of Coins	(50, 115)
Chains	75 right, 170 front

3. A. See the map in Question 1.

B. Yes. Possible explanation: The point for the chains falls close to the best-fit line because the chains are heavy and metal like the other objects along the line. The line shows how the objects sunk along the path of the sinking ship.

Copyright © Kendall Hunt Publishing Company

Name _____ Date _____

Treasure Map

Grace and Nicholas made this map to show where the treasure was on the ocean floor.

Copyright © Kendall Hunt Publishing Company

Making Predictions from Best-Fit Lines SAB • Grade 3 • Unit 12 • Lesson 3 479

Student Activity Book - Page 479

Name _____ Date _____

You will need the treasure map, the map scale, and a ruler to solve these problems.

- Draw a line on the treasure map from the anchor through the heavy objects. Use a ruler to draw a line as close to the points as possible. All of the points may not be on your line but they should be near the line you draw.
- Complete the table with the coordinates for each of the objects on the treasure map.

Object	Coordinates
Cannon Balls	(18, 35)
Sword	
Cannon	
Anchor	
Chest of Coins	
Chains	75 right, 170 front

- A. When Grace and Nicholas were searching for the Ghost Galleon, they found some heavy chains. They found the chains 75 feet to the right and 170 feet to the front of the anchor. Mark a point on the map to show where they found the chains. Label the point on the map.

B. Does this point fall close to your best-fit line? Explain your answer?

Copyright © Kendall Hunt Publishing Company

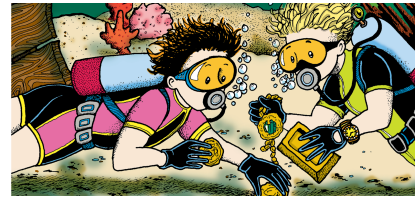
Making Predictions from Best-Fit Lines SAB • Grade 3 • Unit 12 • Lesson 3 481

Student Activity Book - Page 481

4. **A.** 9 cm (to the nearest cm)
B. 90 feet; Possible response: Since each centimeter is equal to 10 feet on the sea floor I multiplied 9×10 feet = 90 feet to get my answer.
5. **A.** See the map in Question 1
B. 90 right, 200 front or (90, 200)

Name _____ Date _____

4. **A.** How far is it from the anchor to the cannon on the map?
- B.** How far is it from the anchor to the cannon on the sea floor? Show or tell how you found your answer.
5. **A.** Grace and Nicholas found the Ghost Galleon at the edge of this grid. Use your line to predict where they found the treasure. Mark and label this point on the map.
- B.** What are the coordinates for the point you marked?



482 SAB • Grade 3 • Unit 12 • Lesson 3

Making Predictions from Best-Fit Lines

Copyright © Kendall Hunt Publishing Company

Student Activity Book - Page 482